

**1st Announcement**

# 13th International Symposium on Urolithiasis

Congress President:

**Tomohiko Ichikawa, M.D., Ph.D.**

Department of Urology, Graduate School of Medicine, Chiba University

Co-Congress President:

**Katsuhito Miyazawa, M.D., Ph.D.**

Department of Urology, Kanazawa Medical University

**July 19(Tue.)-22(Fri.), 2016**

**Makuhari Messe,  
International Conference Hall, Chiba**

<http://www.congre.co.jp/isu2016/>



## Contents

---

Welcome Message .....	1
General Information .....	2
Accommodation .....	3
Access .....	4
About Chiba .....	5

# Welcome Message

---

Dear Colleagues!

It gives us great pleasure to welcome you to the 13th International Symposium on Urolithiasis (ISU 2016) to be held in Makuhari, Japan from July 19th to 22nd, 2016. ISU 2016 is the thirteenth symposium in a series of international symposia which started in Leeds, UK in 1968 and which have been subsequently held every four years in different parts of the world.

We are able to cover all aspects in the field of stone disease- scientifically as well as clinically. Scientists and physicians of different specialities and fields from all over the world will meet to exchange new ideas and knowledge in the history, metaphylaxis, epidemiology, pathogenesis, diagnosis and medical/surgical management of urinary stones.

There will be a multitude of keynote lectures delivered by an international Faculty, intensive Hands-on workshops on Endourology.

Makuhari is conveniently located between Narita International Airport and Haneda Airport. Only 20 minutes away is the Tokyo Disney Resort, the world-famous theme park. You can visit traditional and historical places through Tokyo station, the gateway of Japan, which is just 30 minutes away by train.

I hope you will get new insights and innovations at this meeting and enjoy your stay in Makuhari!

Sincerely yours,

**Tomohiko Ichikawa, M.D., Ph.D.**

Congress President

The 13th International Symposium on Urolithiasis  
Department of Urology, Graduate School of Medicine, Chiba University



**Katsuhito Miyazawa, M.D., Ph.D.**

Co-Congress President

The 13th International Symposium on Urolithiasis  
Department of Urology, Kanazawa Medical University



# General Information

---

## ◆Honorary President

**Koji Suzuki**

Department of Urology Kanazawa Medical University

## ◆Congress President

**Tomohiko Ichikawa, M.D., Ph.D.**

The 13th International Symposium on Urolithiasis Department of Urology, Graduate School of Medicine, Chiba University

## ◆Co-Congress President

**Katsuhito Miyazawa, M.D., Ph.D.**

The 13th International Symposium on Urolithiasis  
Department of Urology, Kanazawa Medical University

## ◆Congress President

**Yukio Naya, M.D., Ph.D.**

The 26th Annual Meeting of Japanese Society on Urolithiasis Research  
Department of Urology, Teikyo University Chiba Medical Center

## ◆Steering Committee

---

**Walter Strohmaier** (Germany)

**Glenn Preminger** (USA)

**Marguerite Hatch** (USA)

**Rosemary Ryall** (Australia)

**Fazil Maricker** (India)

**Saaed Khan** (USA)

**William Robertson** (UK)

**Alberto Trinchieri** (Italy)

**Kemal Sarica** (Turkey)

**Allen Rodgers** (South Africa)

**Philippe Jaeger** (UK)

**Katsuhito Miyazawa** (Japan)

**Hans-Goran Tiselius** (Sweden)

**Nestor Schor** (Brazil)

## ◆Local Organizing Committee

---

**Tomohiko Ichikawa**

Department of Urology, Graduate School of Medicine,  
Chiba University

**Tatsuya Nakatani**

Osaka City University Graduate School of  
Medicine Department of Urology

**Katsuhito Miyazawa**

Department of Urology,  
Kanazawa Medical University

**Taro Iguchi**

Osaka City University Graduate School of  
Medicine Department of Urology

**Yukio Naya**

Department of Urology,  
Teikyo University Chiba Medical Center

**Shinichi Sakamoto**

Department of Urology, Graduate School of Medicine,  
Chiba University

**Isao Hara**

Department of Urology,  
Wakayama Medical University

**Kikuo Nutahara**

Department of Urology,  
Kyorin University School of Medicine

**Yasuo Kohjimoto**

Department of Urology,  
Wakayama Medical University

**Takashi Arakawa**

International University of Health and  
Welfare Mita Hospital

**Takahiro Yasui**

Department of Nephro-urology,  
Nagoya City University Graduate School Medical Sciences

**Atsushi Okada**

Department of Nephro-urology,  
Nagoya City University Graduate School Medical Sciences

# Accomodation

## Hotel Information



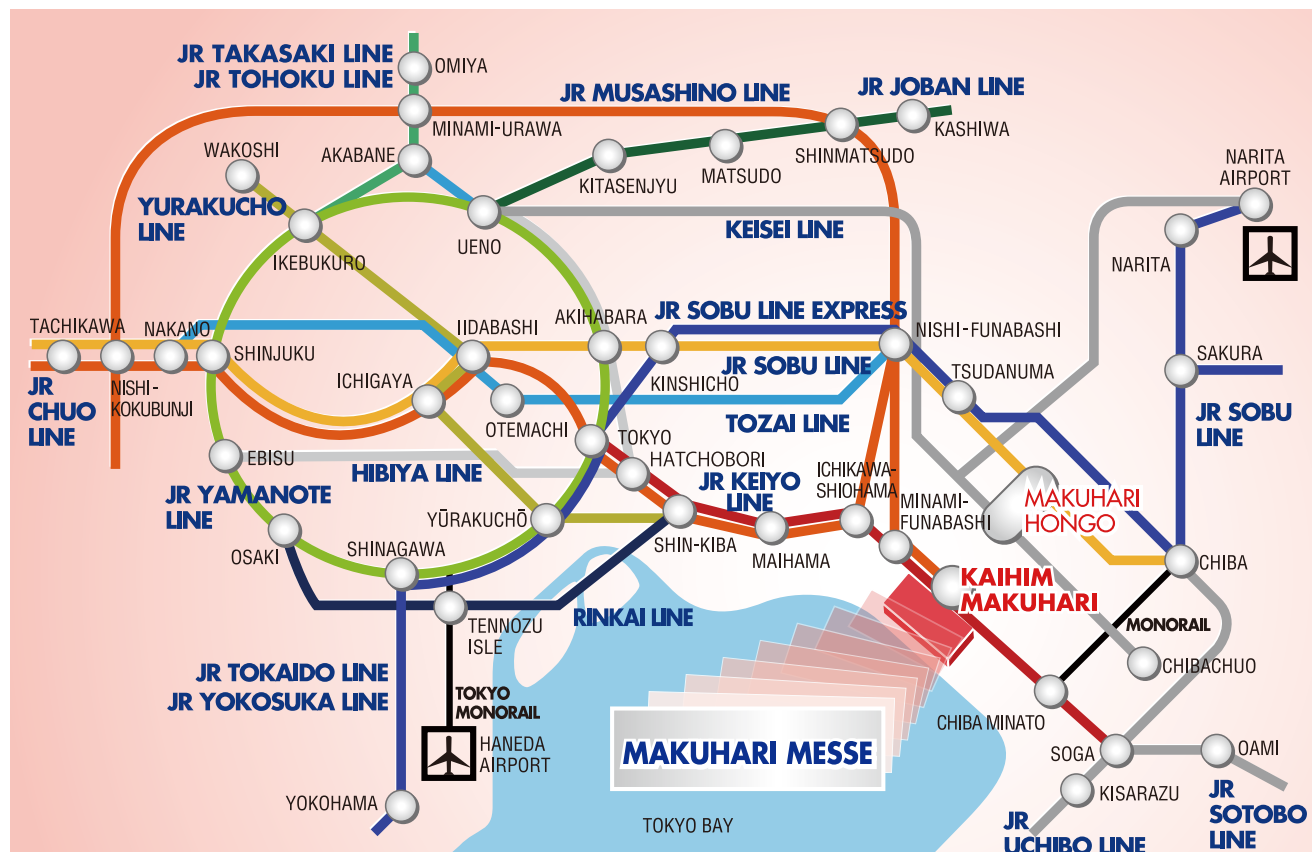
## Hotels

### Kaihin Makuhari (Makuhari Messe)

	Hotel Names	Room Type	Rate (per room)
A	APA Hotels & Resort <Tokyo Bay Makuhari>	Single	¥9,180
		Twin for Single Use	¥17,280
		Twin	¥17,280
B	Hotel New Otani Makuhari	Twin for Single Use	¥17,280
		Twin	¥24,840
C	Hotel Francs	Single	¥11,880
D	Hotel Green Tower Makuhari	Single	¥11,880
E	Hotel The Manhattan	Twin for Single Use	¥14,040 ~ ¥25,380
		Twin	¥15,120 ~ ¥30,240
F	Hotel Springs Makuhari	Single	¥11,880
		Twin for Single Use	¥22,680
		Twin	¥22,680

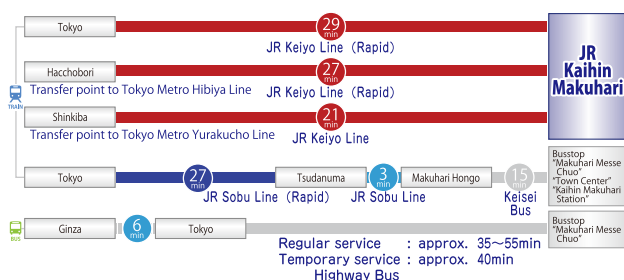
# Access

## Route Maps

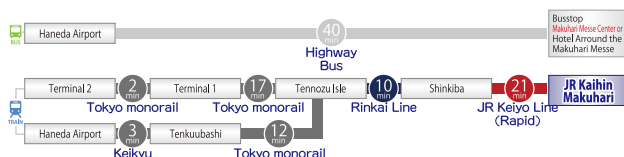


## Route information

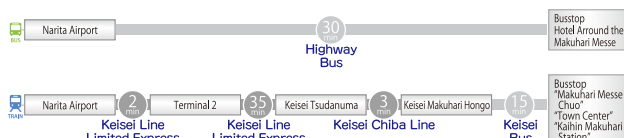
### From Tokyo



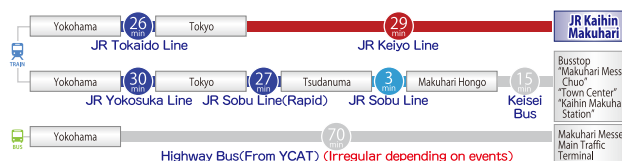
### From Haneda Airport



### From Narita Airport



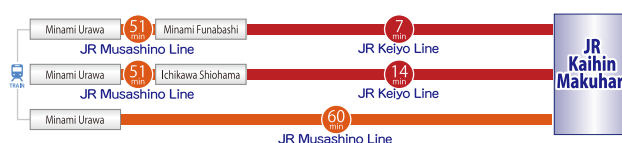
### From Yokohama Districts



### From Chiba Station



### From Saitama Districts



# About Chiba

“Chiba” is located within the Tokyo metropolitan area and blessed with nature’s bounty.

Chiba Prefecture surrounded by the sea and rivers on all four sides is blessed with the nature full of water and green.

Located in the east of the Tokyo metropolitan area, the peninsula projects into the Pacific Ocean.

While the southeastern part faces the Pacific Ocean, the western part faces Tokyo Bay. The northwestern part borders on Tokyo and Saitama, and the northern part borders on Ibaraki.

With an area of 5156,62 sq. km, Chiba is composed of Boso Hill with a series of 200-300 m high mountains, comparatively flat Shimosa Plateau, and a vast plain reaching the Tone River basin and the coast of Kujukuri.

The coastline is as long as 534.4 km, showing varied scenery.

Chiba Prefecture surrounded by the sea on its three sides has a mild climate, warm in winter and cool in summer.

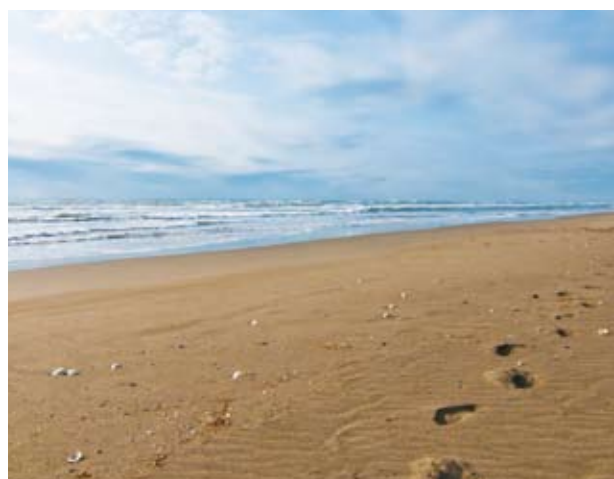
Under the influence of the warm current (Black Current) that flows offshore, the land is hardly frosted even in winter. The precipitation is heavy in summer and light in winter.

The population of Chiba is 6,240,461 (as of Apr. 1, 2013), the 6th largest in Japan, and the average age of the residents is 44.70 (Apr. 1, 2013) years.



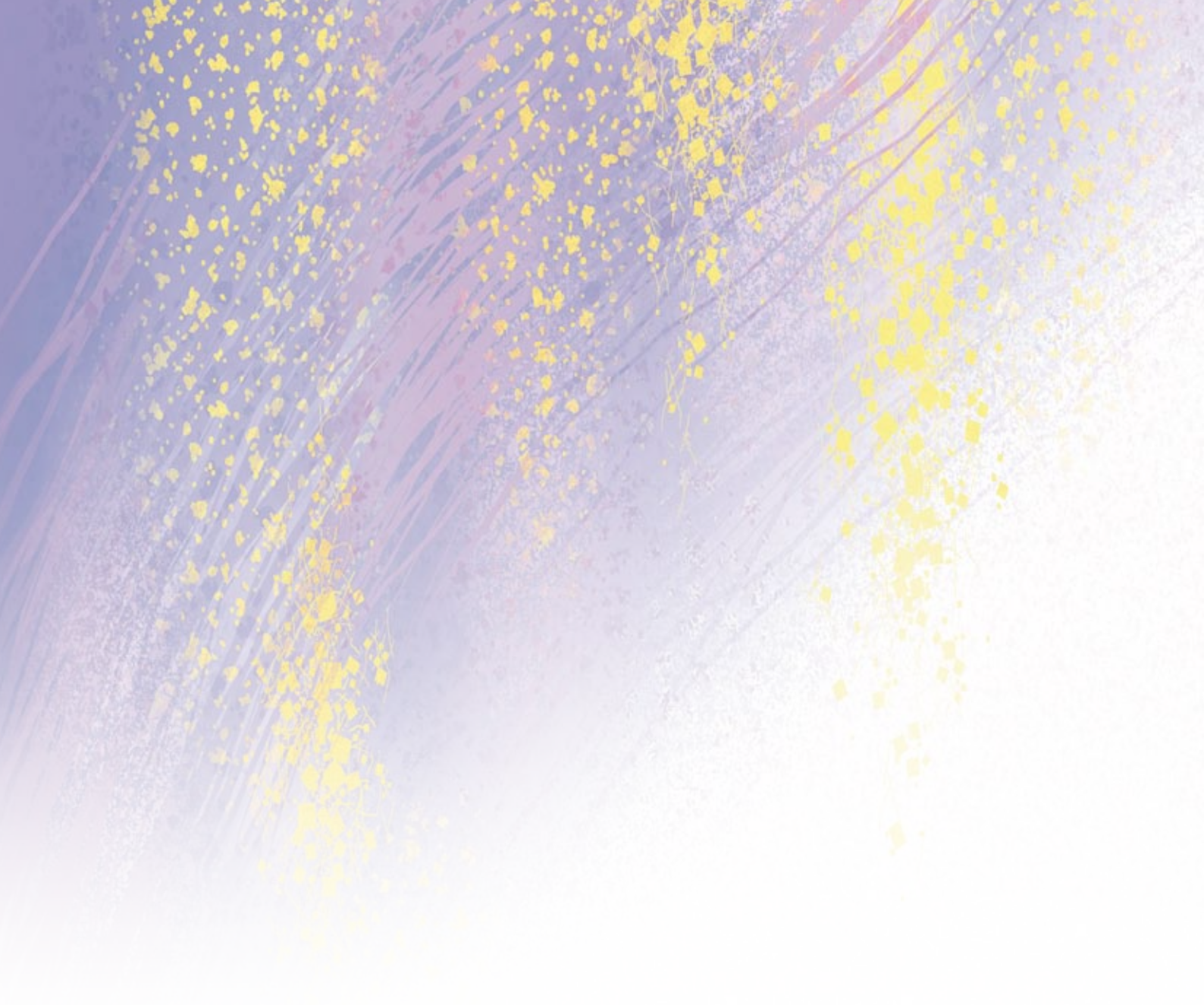
## Hokuso Area

There are many shrines and temples including Narita-san with 10 million or more visitors in a year, and this area has resources blessed with a historical climate and culture including festivals and traditional industries.



## Kujukuri Area

This area consists mainly of Kujukurihama coast extending 66 km, and you can enjoy marine sports utilizing the coastline and beaches and seashore recreation including tourist fisheries throughout the year.



**Congress Secretariat for  
13th International Symposium on Urolithiasis :  
c/o Congress Corporation  
Kohsai-kaikan Bldg., 5-1 Kojimachi, Chiyoda-ku, Tokyo 102-8481, Japan  
TEL: +81-3-5216-5318 FAX: +81-3-5216-5552  
E-mail: [isu2016@congre.co.jp](mailto:isu2016@congre.co.jp)**