

2nd Announcement

13th International Symposium on Urolithiasis

Congress President:

Tomohiko Ichikawa, M.D., Ph.D.

Department of Urology, Graduate School of Medicine, Chiba University

Co-Congress President:

Katsuhito Miyazawa, M.D., Ph.D.

Department of Urology, Kanazawa Medical University

July 19(Tue.)-22(Fri.), 2016

**Makuhari Messe,
International Conference Hall, Chiba**

<http://www.congre.co.jp/isu2016/>

Welcome Message

Dear Colleagues!

It gives us great pleasure to welcome you to the 13th International Symposium on Urolithiasis (ISU 2016) to be held in Makuhari, Japan from July 19th to 22nd, 2016. ISU 2016 is the thirteenth symposium in a series of international symposia which started in Leeds, UK in 1968 and which have been subsequently held every four years in different parts of the world.

We are able to cover all aspects in the field of stone disease- scientifically as well as clinically. Scientists and physicians of different specialities and fields from all over the world will meet to exchange new ideas and knowledge in the history, metaphylaxis, epidemiology, pathogenesis, diagnosis and medical/surgical management of urinary stones.

There will be a multitude of keynote lectures delivered by an international Faculty, intensive Hands-on workshops on Endourology.

Makuhari is conveniently located between Narita International Airport and Haneda Airport. Only 20 minutes away is the Tokyo Disney Resort, the world-famous theme park. You can visit traditional and historical places through Tokyo station, the gateway of Japan, which is just 30 minutes away by train.

I hope you will get new insights and innovations at this meeting and enjoy your stay in Makuhari!

Sincerely yours,

Tomohiko Ichikawa, M.D., Ph.D.

Congress President

The 13th International Symposium on Urolithiasis
Department of Urology, Graduate School of Medicine, Chiba University



Katsuhito Miyazawa, M.D., Ph.D.

Co-Congress President

The 13th International Symposium on Urolithiasis
Department of Urology, Kanazawa Medical University



General Information

◆Honorary President

Koji Suzuki

Department of Urology Kanazawa Medical University

◆Congress President

Tomohiko Ichikawa, M.D., Ph.D.

The 13th International Symposium on Urolithiasis Department of Urology, Graduate School of Medicine, Chiba University

◆Co-Congress President

Katsuhito Miyazawa, M.D., Ph.D.

The 13th International Symposium on Urolithiasis
Department of Urology, Kanazawa Medical University

◆Congress President

Yukio Naya, M.D., Ph.D.

The 26th Annual Meeting of Japanese Society on Urolithiasis Research
Department of Urology, Teikyo University Chiba Medical Center

◆Steering Committee

Walter Strohmaier (Germany)

Rosemary Ryall (Australia)

William Robertson (UK)

Allen Rodgers (South Africa)

Hans-Goran Tiselius (Sweden)

Glenn Preminger (USA)

Fazil Maricker (India)

Alberto Trinchieri (Italy)

Philippe Jaeger (UK)

Nestor Schor (Brazil)

Marguerite Hatch (USA)

Saaed Khan (USA)

Kemal Sarica (Turkey)

Katsuhito Miyazawa (Japan)

◆Local Organizing Committee

Tomohiko Ichikawa

Department of Urology, Graduate School of Medicine,
Chiba University

Katsuhito Miyazawa

Department of Urology,
Kanazawa Medical University

Yukio Naya

Department of Urology,
Teikyo University Chiba Medical Center

Isao Hara

Department of Urology,
Wakayama Medical University

Yasuo Kohjimoto

Department of Urology,
Wakayama Medical University

Takahiro Yasui

Department of Nephro-urology,
Nagoya City University Graduate School Medical Sciences

Keiichi Tozawa

Department of Nephro-urology, Nagoya City University
Graduate School Medical Sciences

Tatsuya Nakatani

Osaka City University Graduate School of
Medicine Department of Urology

Taro Iguchi

Osaka City University Graduate School of
Medicine Department of Urology

Shinichi Sakamoto

Department of Urology, Graduate School of Medicine,
Chiba University

Kikuo Nutahara

Department of Urology,
Kyorin University School of Medicine

Takashi Arakawa

International University of Health and
Welfare Mita Hospital

Atsushi Okada

Department of Nephro-urology,
Nagoya City University Graduate School Medical Sciences

Motoyuki Masai

Seijin-kai Mihama Hospital

Call for Paper

The Organizing Committee encourages meeting participants to submit abstract of papers to be considered for presentation at the ISU2016.

Invited Speakers List

EAU

Prof. Thomas Knoll
Klinikum Sindelfingen-Böblingen gGmbH

The role of fluid intake in the recurrence prevention of urinary stones

Prof. Roswitha Siener
University of Bonn

AUA

Dr. Bodo Egon Knudsen
The Ohio State University Wexner Medical Center

Transporter and urolithiasis

Prof. Yoshikatsu Kanai
Osaka University Graduate School of Medicine

Extracorporeal shock wave lithotripsy (ESWL)

Prof. Christian Georg CHAUSSY
University of Regensburg, Germany

Animal model of urolithiasis

Prof. Saeed R. Khan
Department of Pathology, Department of Urology, College of Medicine, University of Florida

Residual Fragments: Definition, Evaluation and Management

Prof. Kemal Sarica
Department of Urology, Dr. Lutfi KIRDAR Research and Training Hospital

Role of race, ethnicity and environmental factors

Prof. Allen Lawrence Rodgers
University of Cape Town

Urinary Risk Factors for Urolithiasis

Prof. William Gibson Robertson
Nuffield Department of Surgical Sciences, John Radcliffe Hospital, University of Oxford

Randall's Plaque (Tentative)

Prof. James C. Williams
Indiana University School of Medicine

Overview of endourology

Prof. Walter Ludwig Strohmaier
KLINIKUM COBURG

The Primordial Protein: Macromolecules, Minerals and Renal Stones

Prof. Rosemary Lyons Ryall
Flinders University

Cystinuria

Prof. Tomohiko Ichikawa
Department of Urology, Graduate School of Medicine, Chiba University

A Probiotic Treatment for Kidney Stone Disease

Prof. Marguerite Hatch
University of Florida



Abstract Categories

<Oral/ Moderated Poster/ Free Poster>

1. Epidemiology and Nutrition
2. Pathogenesis of Stones
3. Crystals and Cells
4. Randall's plaques and hypercalciuria
5. Genetics of Stones Disease
6. Inhibitors and Promoters of Stone-Formation
7. Metabolic Factors and Stones
8. Diagnosis of Urolithiasis
9. Medical Management of Urolithiasis
10. ESWL and Endourology
11. Urolithiasis in pediatrics and pregnant woman
12. Urolithiasis and inflammation
13. Urolithiasis and osteoporosis/bone fracture
14. Uric Acid Stone
15. Others

<Public Offering Symposium>

1. Urolithiasis in pediatrics and pregnant woman
2. Urolithiasis and inflammation
3. Urolithiasis and osteoporosis/bone fracture

General Guidelines

- Accepted authors must register for the ISU2016.
- All abstracts must be submitted online by **January 15, 2016** (tentative) to be considered.
- Authors will be notified by e-mail of their abstract results.
For more details, please refer to the meeting website at <http://www.congre.co.jp/isu2016/abstract.html>

Registration

Participants are encouraged to make early registration by **April 19, 2016** to take advantage of fee incentives. Online registration will be available on the website at <http://www.congre.co.jp/isu2016/registration.html>

Category	Early Registration (Dec 8, 2015–Apr 19, 2016)	Late Registration (Apr 20, 2016–July 5, 2016)	On-site Registration (July 6–, 2016)
Doctor	JPY40,000	JPY45,000	JPY50,000
Resident	JPY15,000	JPY15,000	JPY20,000
Medical staff/Student *	—	—	JPY10,000
One day	—	—	JPY15,000
Accompanying Person	JPY10,000	JPY10,000	JPY15,000
Gala Dinner	JPY7,000	JPY8,000	JPY10,000

*The reduced registration fee for "Student" is only granted if a photocopy of the students' identification card or statement of the head of the department is provided.

Registration fees including :

- Admission to sessions/exhibition, congress kit, abstract book, and lunch for each day

* All registrants are invited to the Welcome Reception on July 19.

Methods of Payment

After your registration from website, all payments must be made in Japanese yen by credit card.

(Credit cards: VISA, Master Card, American Express, Diners Club, JCB)

If you can not pay for a registration fee by credit card, please contact the secretariat.

Cancellation and Refund Policy

All cancellations made in writing and received by the Secretariat by April 19, 2016 will be eligible for a full refund. Cancellations made between April 20-May 31, 2016 will be refunded 50% of their registration fee. No refunds will be issued for cancellations received on or after May 31, 2016 or for no-shows.

Letter of Invitation

Upon request, the secretariat will issue a letter of invitation to facilitate a participant's travel and visa arrangements. It does not imply provision of any financial or other support.

Certificate of Attendance

Upon request, a certificate of attendance will be issued to participants.

Important Dates

- Early Registration: **Dec 8, 2015 - Apr 19, 2016**
- Abstract Submission: **Oct 13, 2015 - Jan 15, 2016**
- Notification of Acceptance of Abstract: **Mid - March, 2016**

Accommodation

Hotel Information



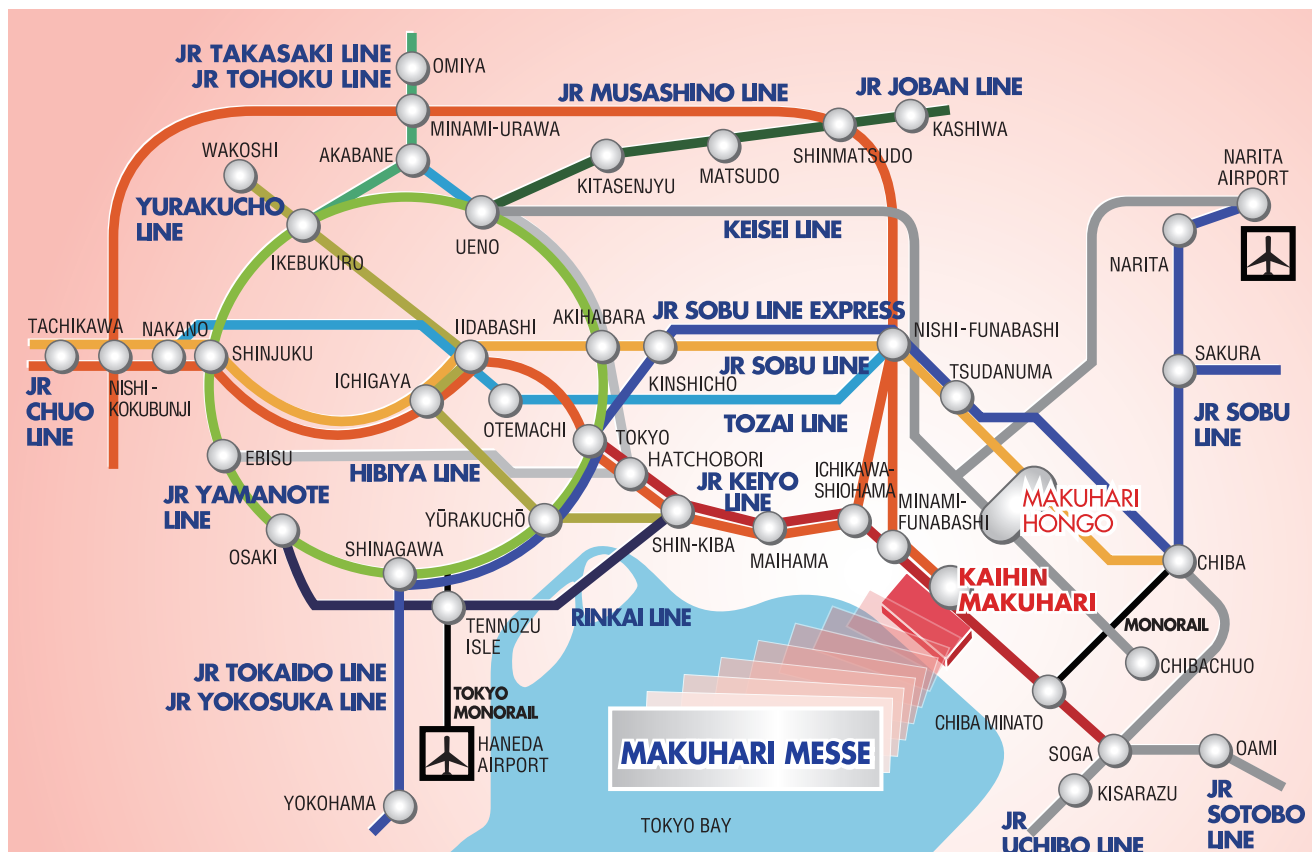
Hotels

Kaihin Makuhari (Makuhari Messe)

	Hotel Names	Room Type	Rate (per room)
A	APA Hotels & Resort <Tokyo Bay Makuhari>	Single	¥9,180
		Twin for Single Use	¥17,280
		Twin	¥17,280
B	Hotel New Otani Makuhari	Twin for Single Use	¥17,280
		Twin	¥24,840
C	Hotel Francs	Single	¥11,880
D	Hotel Green Tower Makuhari	Single	¥11,880
E	Hotel The Manhattan	Twin for Single Use	¥14,040 ~ ¥25,380
		Twin	¥15,120 ~ ¥30,240
F	Hotel Springs Makuhari	Single	¥11,880
		Twin for Single Use	¥22,680
		Twin	¥22,680

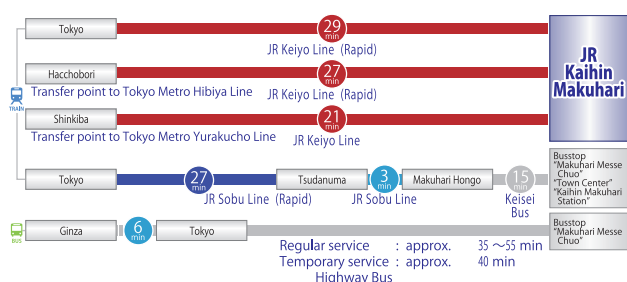
Access

Route Maps

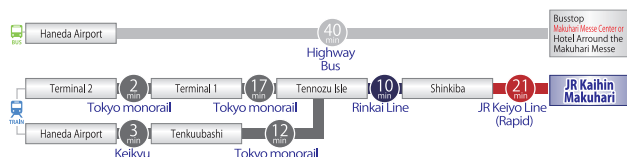


Route information

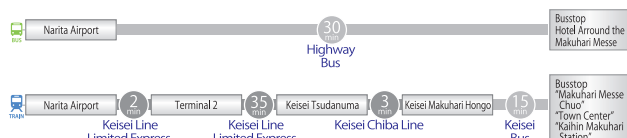
From Tokyo



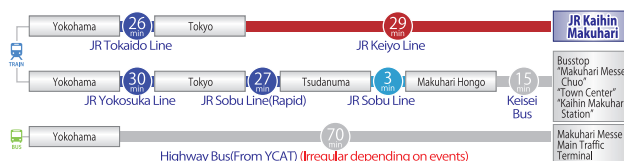
From Haneda Airport



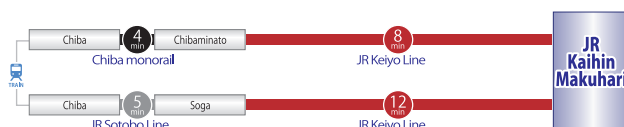
From Narita Airport



From Yokohama Districts

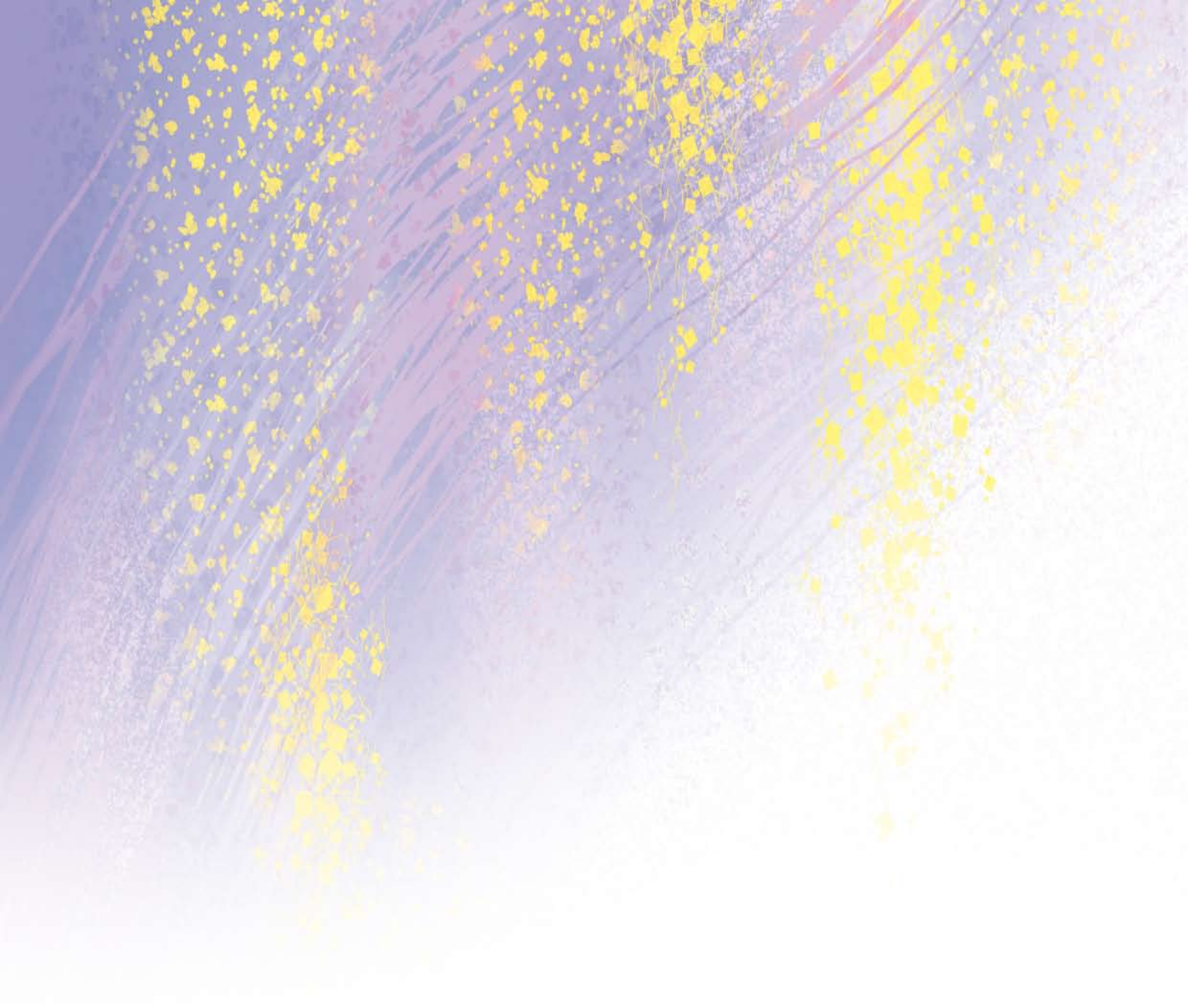


From Chiba Station



From Saitama Districts





**Congress Secretariat for
13th International Symposium on Urolithiasis :
c/o Congress Corporation
Kohsai-kaikan Bldg., 5-1 Kojimachi, Chiyoda-ku, Tokyo 102-8481, Japan
TEL: +81-3-5216-5318 FAX: +81-3-5216-5552
E-mail: isu2016@congre.co.jp**