

Category A:

Grand Prince Hotel Kyoto/THE WESTIN MIYAKO KYOTO/HOTEL GRANVIA KYOTO

Hotel Rates(JPY):

Single Room: 17,000~32,000 (breakfast included)

Twin Room: 19,000~34,000/2 person (breakfast included)

※1JPY=0.0097USD(22.Mar.2014)



Grand Prince Hotel Kyoto

The Grand Prince Hotel Kyoto was designed by the late Togo Murano, an architect who made a valuable contribution to Japanese architecture. The hotel features spacious guest rooms, elegant banquet halls, restaurants, and a Sukiya-style teahouse in the Japanese garden, for the real Kyoto experience.



Distance from the Kyoto International Convention center: 3 minutes (on foot)

Nearest Subway Station: KOKUSAI KAIKAN Approximately 3 minutes on foot

Address: Takaragaike, Sakyo-ku, Kyoto-shi, Kyoto, 606-8505, Japan

Phone: +81-(0)75-712-1111 Fax: +81-(0)75-712-7677

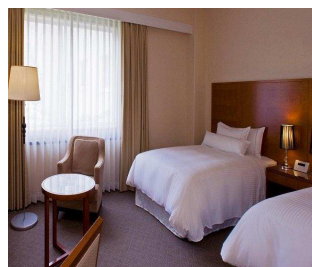
Hotel URL: <http://www.princehotels.com/en/kyoto/>



THE WESTIN MIYAKO KYOTO

Take advantage of our sophisticated meeting spaces and diverse restaurants. Leisure and refreshment are at hand with our Japanese gardens, on-site mountain trail, rooftop tennis court, and lap pool. Renew with a pampering treatment at our spa.

The Westin Miyako Kyoto, an urban resort surrounded by the green Higashiyama Hills, is located right next to the subway station and within walking distance of downtown. With convenient access to the city, guests can explore the surrounding area or stay close by.



Distance from the Kyoto International Convention center: 30 minutes (by subway)

Nearest Subway Station: KEAGE Approximately 2 minutes on foot

Address: Keage, Sanjo, Higashiyama-ku, Kyoto 605-0052, Japan

Phone: +81-(0)75-771-7111 Fax: +81-(0)75-751-2490

Hotel URL: <http://www.miyakohotels.ne.jp/westinkyoto/english/index.html/>



HOTEL GRANVIA KYOTO

Hotel Granvia Kyoto is an integral part of the JR Kyoto Station Building, the visually striking architectural masterpiece which also includes a department store, museum, musical theater, and a vast underground shopping mall. From this convenient location, hotel guests have direct and easy access to and from Kansai International Airport and major metropolitan destinations across Japan including Osaka, Tokyo.



Distance from the Kyoto International Convention center: 25 minutes (by subway)

Nearest Subway Station: KYOTO Approximately 1 minute on foot

Address: Kyoto Station, Karasuma Chuo-guchi, Shiokoji-sagaru Karasumadori,
Shimogyo-ku, Kyoto, 600-8216, Japan

Phone: +81-(0)75-344-8888 **Fax:** +81-(0)75-344-4400

Hotel URL: <http://www.granviakyoto.com/>

Category B:

Hotel Monterey Kyoto/NEW MIYAKO HOTEL

Hotel Rates(JPY):

Single Room: 12,000~20,000 (breakfast included)

Twin Room: 17,000~26,000/2 person (breakfast included)

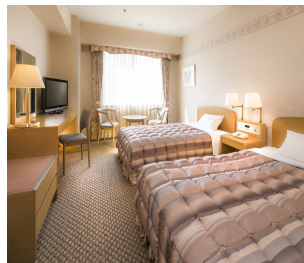
※1JPY=0.0097USD(22.Mar.2014)

**Hotel Monterey Kyoto**

A hotel that combines the best of Kyoto's stylish culture and Britain's traditional heritage. The design is based on the arts and crafts of Scotland, particularly Edinburgh, its ancient capital. In fact Kyoto and Edinburgh are not only sister cities in name, but they also share many traits such as the lively street atmosphere and traditional culture. This hotel expresses the relationship between the two cities through its traditional architecture and warm atmosphere.

**Distance from the Kyoto International Convention center:** 25minutes (by subway)**Nearest Subway Station:** KARASUMA OIKE Approximately 2 minutes on foot**Address:** 604 Manjuya-cho, Sanjo-sagaru, Karasuma-dori, Nakagyo-ku, Kyoto, 604-8161, Japan**Phone:** +81-(0)75-251-7111 **Fax:** +81-(0)75-251-7112**Hotel URL:** <http://www.hotelmonterey.co.jp/en/htl/kyoto/index.html>**NEW MIYAKO HOTEL**

Boasting a prime location within a two-minute walking distance from Hachijoguchi exit of "Kyoto Station" – the gateway to the ancient capital of Kyoto – the New Miyako Hotel offers an ideal base and various package plans for leisure and business travelers.

**Distance from the Kyoto International Convention center:** 25minutes (by subway)**Nearest Subway Station:** KYOTO Approximately 5 minutes on foot**Address:** 17, Nishikujo-Inmachi Minami-ku, Kyoto, 601-8412, Japan**Phone:** +81-(0)75-661-7111 **Fax:** +81-(0)75-661-7135**Hotel URL:** <http://www.miyakohotels.ne.jp/newmiyako/english/index.html/>

CategoryC:

Hearton Hotel KYOTO/Mitsui Garden Hotel Kyoto Shijo/Mitsui Garden Hotel Sanjo/
Hotel Hokke Club Kyoto

Hotel Rates(JPY):

Single Room: 9,000~14,000 (breakfast included)

Twin Room: 14,000~19,000/2 person (breakfast included)

※1JPY=0.0097USD(22.Mar.2014)

**Hearton Hotel KYOTO**

The hotel is located near one of the major intersections in Kyoto, where Karasuma Dori meets Oike Dori, than the subway below this intersection is the junction of the Karasuma line and the Tozai Line. Some of the major attractions of Kyoto (Nijo jo, Honganji etc) are within walking distance, as is the Wining / Dining and Shopping area of Kawaramachi.



Distance from the Kyoto International Convention center: 25minutes(by subway)

Nearest Subway Station: KARASUMA OIKE Approximately 2 minutes on foot

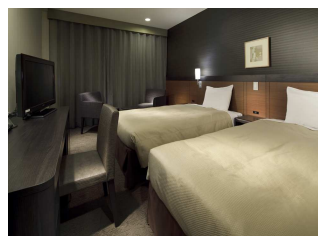
Address:

Phone: +81-(0)75-222-1300 **Fax:** +81-(0)75-222-1313

Hotel URL: <http://www.heartonhotel.com/kyo/Default.aspx>

**Mitsui Garden Hotel Kyoto Shijo**

We stayed in Mitsui Garden Hotel Shijo in November 2013. First don't mix it up with Mitsui Garden Hotel Sanjo which we did. They gave us a plan in Mitsui Garden Hotel Sanjo how to find Mitsui Garden Hotel Shijo but it was not so easy.



Distance from the Kyoto International Convention center: 25minutes(by subway)

Nearest Subway Station: Shijo Approximately 6 minutes on foot

Address: 707-1 Myodenji-cho, Shijo-sagaru, Nishinotoin St, Shimogyo-ku, Kyoto, 600-8472

Phone: +81-(0)75-361-5531 **Fax:** +81-(0)75-361-5100

HOTEL URL: <http://www.gardenhotels.co.jp/eng/kyoto-shijo/>



Mitsui Garden Hotel Sanjo

Just west of the downtown dining and shopping district, this is a clean and efficient hotel that offers good value for the price and reasonably comfortable rooms.

Our independent authors have visited Mitsui Garden Hotel Kyoto Sanjo and selected this as one of our recommended hotels in Kyoto.



Distance from the Kyoto International Convention center: 25minutes(by subway)

Nearest Subway Station: Karasumaoike Approximately 1 minute on foot

Address: 80, Mikura-cho, Nishiiru, Karasuma, Sanjo St., Nakagyo-ku, Kyoto, 604-8166

Phone: +81-(0)75-222-3331 Fax: +81-(0)75-256-2351

HOTEL URL: <http://www.gardenhotels.co.jp/eng/kyoto-sanjo/>



Hotel Hokke Club Kyoto

We are located in the front of karasuma central exit of Kyoto station. It only takes 1 minute. We are located in the front of karasuma central exit of Kyoto station.

All single rooms have 140cm double bed. Free internet is available in all rooms. Only ladies can get lady's bag.



Distance from the Kyoto International Convention center: 25minutes(by subway)

Nearest Subway Station: Kyoto Approximately 2 minutes on foot

Address: Kyoto-eki Karasuma Chuo-guchi Shomen, Shimogyo-ku, Kyoto-shi, Kyoto, 600-8216

Phone: +81-(0)75-361-1251 Fax: +81-(0)75-361-1255

HOTEL URL: <http://www.hokke.co.jp/english/2601.html>